

STA Review

Volume 211

PPK 174/05/2011(028092)

Monthly Magazine of the Sarawak Timber Association

April 2011



4
MEETING
on Tax Incentives
for Forest Plantain
Development



6
THE MALAYSIAN
Timber Council (MTC) Business
Visit to the United States Of
America (USA)



8
ROADSHOWS
on the Collation of Information
Pertaining to Corporate Social
Responsibility (CSR) Initiatives
of STA Member Companies

CONTENTS

PAGE

STA REVIEW

<i>Discussion on the New Levy Mechanism with Industry Associations</i>	3
<i>Upcoming Events</i>	3
<i>Meeting on Tax Incentives for Forest Plantation Development</i>	4
<i>Formaldehyde Emission Testing Laboratory</i>	5
<i>The Malaysian Timber Council (MTC) Business Visit to the United States Of America (USA)</i>	6
<i>Roadshows on the Collation of Information Pertaining to Corporate Social Responsibility (CSR) Initiatives of STA Member Companies</i>	8
<i>Understanding the Business Case of Corporate Social Responsibility (CSR)</i>	9
<i>Malaysian Timber Council (MTC) Global WoodMart 2012</i>	10
<i>Notification on Acting Consul General of the Republic of Indonesia</i>	11
<i>Forests (Trained Workmen) Rules</i>	11
<i>Are You Missing Out on Timber-Related News And Trade Enquiries?</i>	11

REGULAR FEATURES

<i>Statistics</i>	12
<i>Rainfall data</i>	24



COVER IMAGE:
Kubah National Park
Land Area : 2,230 (ha)
Date Gazetted : 11 May 1989
Location : Kuching Division
(22km west of Kuching City)

Kubah's most famous feature is its palms. Almost a hundred different palm species can be found in an area of just over 22 sq km, making Kubah probably the richest palm habitat for its size anywhere in the world.

Other attractions include its spectacular primary rainforest (such as mixed dipterocarp and isolated patches of kerangas), rich selection of orchids and ferns, and crystal clear jungle streams as well as waterfalls and are home to bearded pigs, mouse deers and many species of reptiles and amphibians.

Photo courtesy of Sarawak Forestry Corporation

is a monthly magazine published by Sarawak Timber Association (STA) for its members. While every effort has been made to ensure that the information printed in this magazine is accurate and correct, neither STA nor its Council Members, Officers or Employees shall assume any responsibility or be made liable for any inaccuracies and errors printed; nor is such publication, unless otherwise, stated, necessarily the views of STA, its Council Members, Officers or Employees. The contents of the STA Review may be reprinted with prior written permission from STA.

STA Review is mailed free of charge to all STA Members. Paid subscription is also available to non-members. An annual subscription fee of RM200.00 is charged to organisations within Malaysia, and US\$300.00 to foreign organisations in other Asian countries, Australia and New Zealand, and US\$500.00 to foreign organisations in American and European countries respectively. The subscription fee is inclusive of courier charges. STA reserves the right to change the subscription fees from time to time to reflect currency fluctuations. Paid subscription is non-refundable.

EDITORIAL BOARD

Chief Editor

Dr. Peter C. S. Kho

Editor

Law Hui Chau

Members

*Annie Ting
Erin Tan
Jaime Chan
Miriam Hong
Salfa Kamazura
Winnie Lee*

Published by

Sarawak Timber Association
11 Floor, Wisma STA,
26, Jalan Datuk Abang Abdul Rahim,
93450 Kuching, Sarawak, Malaysia
Tel: ++ (60 82) 332 222
Fax: ++ (60 82) 487 888, 487 999
Email: sta@sta.org.my
Website: www.sta.org.my

Printed by

Wisma Printing Sdn Bhd
Lot 1949, Section 66, KTL D, Lorong Tekad 1,
Jalan Tekad, Pending Industrial Estate,
93450 Kuching, Sarawak, Malaysia
Tel : ++ (60 82) 338 131 (4 Lines)
Fax : ++ (60 82) 333 002
Email : wismaprinting@yahoo.com

DISCUSSION ON THE NEW LEVY MECHANISM WITH INDUSTRY ASSOCIATIONS

The Ministry of International Trade and Industry (MITI) called for a discussion with the Industry Associations on the New Levy Mechanism on 19 April 2011 at Perdana Hall, Level 11, MITI Kuala Lumpur. The New Levy Mechanism which is to commence from year 2011 proposes to increase the levy rates on the recruitment of foreign workers, by 5%, 10% and 15% depending on the percentage of foreign workers to total employment in the company. The discussion was attended by approximately thirty (30) representatives from various Industry Associations and the Ministry of Human Resources.

In the said discussion, majority of the representatives from the Industry Associations expressed their dissatisfaction in the newly proposed levy mechanism and increment rates. They also complained about the present procedures which pose a lot of problems to the industries particularly the employers in Peninsular Malaysia who are still required to go through recruitment agents to source for foreign workers.

The Sarawak Timber Association (STA) strongly objected to the implementation of the proposed new levy mechanism in Sarawak, as the workforce in Sarawak is not able to support the growth and development in Sarawak as locals usually shun away from the timber industry.

Participants had also emphasised that the main concern of the Government for proposing the new levy mechanism is to curb the increasing social problems in the country created by illegal workers. However, it is believed that the main reason for the increasing social problems is the weak enforcement capacity of the relevant authority in the country. Hence, the Government should not burden the employers by increasing levy for the recruitment of foreign workers.

In the said discussion, MITI has confirmed that the proposed levy mechanism is **only applicable to employers in Peninsular Malaysia and not Sarawak and Sabah**. Nonetheless, STA has put forward its stance in writing to MITI on why the new levy mechanism is absolutely not suitable for implementation in Sarawak and that STATUS QUO in Sarawak should therefore be maintained.

Kementerian Perdagangan Antarabangsa dan Industri (MITI) telah mengadakan satu perbincangan pada 19 April 2011 di Dewan Perdana, Aras 11, MITI Kuala Lumpur untuk membincangkan Mekanisma Levi Baru. Mekanisma Levi Baru ini mencadangkan supaya kadar levi bagi pengambilan pekerja asing dinaikkan mulai tahun 2011 iaitu pada kadar kenaikan 5%, 10% dan 15% bergantung kepada peratusan pekerja asing kepada jumlah pekerja.

Dalam perbincangan tersebut, MITI telah mengesahkan bahawa cadangan mekanisma levi ini **hanya digunakan kepada pekerja-pekerja di Semenanjung Malaysia dan bukan untuk Sarawak dan Sabah**.

国际贸易及工业部(MITI)于2011年4月19日假吉隆坡MITI办公室与工商界公会召开会议商讨有关新征税机制。这项增加聘请外劳新征税机制提议已于2011年开始。这将根据总员工对外聘请比率计算,提高征税率达5%,10%和15%。

MITI在会议中证实这项征税机制提议只限于西马雇主,砂拉越和沙巴除外。

UPCOMING EVENTS

DATE	EVENTS	VENUE	ORGANISER
30 May - 3 June	Ligna Hanover : World Fair for the Forestry and Wood Industries	Hannover, Germany	<ul style="list-style-type: none">Deutsche Messe AG
22 - 23 June	Forests, Markets, Policy & Practice 2011 - 4 th Annual International Conference and Technical Workshops	Shanghai, China	<ul style="list-style-type: none">Rainforest Alliance (RA)WWF- Global Forest & Trade Network (GFTN)The Forest Trust (TFT)

MEETING ON TAX INCENTIVES FOR FOREST DEVELOPMENT

A meeting on tax incentives for forest plantation development was jointly organised by Sarawak Timber Association (STA), Sabah Timber Industries Association (STIA), Timber Association of Sabah (TAS) and Forest Management Unit License Holders Sabah (FMULH) with YB Tan Sri Bernard Giluk Dompok, the Minister of Plantation Industries and Commodities at The Pacific Sutera, Kota Kinabalu on 25 April 2011. The meeting was also attended by officers from the Ministry of Plantation Industries and Commodities (MPIC), the Malaysia Timber Industry Board (MTIB) and Forestry Department Sabah. The purpose of the meeting was to brief the Minister on the current progress of forest plantation development in both Sabah and Sarawak as well as to submit the joint proposals and request pertaining to these two Tax Incentives to the Minister. Pemanca Datuk Wong Kie Yik, the Chairman of STA, together with six Members from STA attended the meeting with the Minister.

In September 2009, the Government gazetted two new Orders to introduce two new tax incentives to accelerate the development of forest plantations in the country as the continuous supply of adequate timber as raw material for our furniture and other value-added timber products has been identified as one of the main stumbling blocks from achieving the target export value of RM53 billion under the National Timber Industry Policy (NATIP). The two new Gazette Orders are:

1. Income Tax (Deduction for Investment in an Approved Forest Plantation Project) Rules 2009
2. Income Tax (Exemption) (No.10) Order 2009

In the meeting, the Minister was informed that the slow progress of forest plantation development in both Sabah and Sarawak was attributed to a few reasons: where financial burden being the major one. Unfortunately, the interpretations by the Government officials on some vital interpretations of the two Gazette Orders have rendered many forest plantation companies not eligible to qualify. The Minister was also presented with joint proposals on the two new tax incentives and a request to extend the validity of the two (2) Gazette Orders by another twelve (12) months to 31 December 2012 in view of impending issues on the technical interpretations used in the two (2) Gazette Orders.

The two key points to be noted from the above meeting were:

1. the Minister wanted to know the financial implications of the Government if the two new Gazette Orders were to be given out to all companies, including those companies that had started planting before they have submitted their applications for tax incentives provided under the two Gazette Orders, and

2. Dr Jalaluddin Harun, the Director General of MTIB, suggested that the Government might consider giving the two new tax incentives to all companies for areas that have not been planted rather than for the whole forest plantation project.

It is with the hope that through this meeting, the Ministry of Plantation Industries and Commodities would endorsed the joint proposals and request, and to work together with Ministry of Finance to resolve the impending issues on the key interpretations of the two Gazette Orders for the benefit of the development of forest plantation in Malaysia particularly for Sabah and Sarawak.



Photo: Meeting in progress

本會，沙巴木材工業公會(STIA)，沙巴木材公會 (TAS) 和沙巴森林管理單位執照持有者(FMULH) 于2011年4月25日假亞庇，絲綢太平洋酒店聯合主辦重植森林稅收獎勵會議。同時也與種植與原產部部長，丹斯里柏納東博（譯音）進行對話。

會議旨在告知部長關於沙巴和砂拉越目前重植森林的進展及提交兩項新的稅收獎勵聯合提案和要求政府另外延長兩項憲法刊登至2012年12月31日（即12個月後），以解決在執行這兩項憲法刊登所面對的技術解釋課題。



REST PLANTATION



Photo: From left to right Dr Jalaluddin Harun, Director General, MTIB, Datuk Wilfred Madius Tangau, Chairman, MTIB, Datuk James Hwang You Chuaang, President STIA, Tan Sri Bernard Giluk Dompok, the Minister of Plantation Industries and Commodities, Pemanca Datuk Wong Kie Yik, Chairman STA, Mr Ho Khoy Lim - Sabah Forest Industries Sdn Bhd (FMULH) – Head of Delegation

Satu mesyuarat Insentif Cukai untuk Pembangunan Perladangan Hutan telah dianjurkan bersama oleh Persatuan Kayu Kayan Sarawak (STA), Persatuan Industri Kayu Kayan Sabah (STIA), Persatuan Kayu Kayan Sabah (TAS) dan Pemegang Lesen Unit Pengurusan Hutan Sabah (FMULH) dan YB Tan Sri Bernard Giluk Dompok, Menteri Perusahaan Perladangan dan Komoditi di Sutera Pasifik, Kota Kinabalu pada 25 April 2011.

Mesyuarat tersebut bertujuan untuk memaklumkan Menteri tentang perkembangan terkini pembangunan perladangan hutan di Sabah dan Sarawak, dan juga menyerahkan cadangan-cadangan bersama dua insentif cukai baru tersebut, serta membentangkan satu permintaan bagi melanjutkan tempoh sah bagi dua (2) Perintah Warta tersebut supaya dilanjutkan sebanyak dua belas (12) bulan lagi, iaitu sehingga 31 Disember 2012 dengan mengambil kira isu-isu berkenaan dengan tafsiran teknikal yang digunakan pada dua (2) Perintah Warta ini.



FORMALDEHYDE EMISSION TESTING LABORATORY - CARB

YB Hajah Nancy Haji Shukri, the Chairman of Malaysia Forestry Research and Development Board (MFRDB) recently declared the Formaldehyde Emission Testing Laboratory – CARB at Forest Research Institute of Malaysia (FRIM) open.

This laboratory, second to be set up in this region after PT Mutuagung Lestari in Indonesia, is capable of testing hardwood plywood, particleboard and medium density fibreboard to meet product-specific, production-based “cap” standard. For more information, please contact: Formaldehyde Emission Testing Laboratory – CARB, FRIM at 03-6279 7287 or email: rahims@frim.gov.my or rafeadah@frim.gov.my

YB Hajah Nancy Haji Shukri, Pengerusi Lembaga Penyelidikan dan Pembangunan Hutan Malaysia (MFRDB) baru-baru ini merasmikan pembukaan Makmal Pengujian Emisi Formaldehyde - CARB di Institut Penyelidikan Hutan Malaysia (FRIM).

Makmal tersebut merupakan makmal kedua yang ditubuhkan di rantau ini selepas PT Mutuagung Lestari di Indonesia, ia dapat menguji papan lapis kayu keras, papan serpai dan papan gentian berketumpatan sederhana bagi memenuhi spesifikasi produk, pengeluaran berasaskan piawai “cap”.

马来西亚林业研究和发发展局(MFRDB)主席，南茜议员（译音）近期宣告位于马来西亚森林研究机构(FRIM) 的甲醛释放量测试实验室 - CARB正式起用。

该实验室是本区域第二所成立的实验室。第一所成立在印尼，PT Mutuagung Lestari。该实验室可根据产品具体及生产标准测试硬木合板，胶合板和中密度纤维板。

THE MALAYSIAN TIMBER COUNCIL THE UNITED STATES

The Malaysian Timber Council (MTC) organised a business visit to United States of America (USA) from 9 to 20 April 2011. The programme comprised business networking with potential US timber buyers and factory visits in Los Angeles (California), New Orleans (Louisiana) and Memphis (Tennessee) as well as participation in the International Wood Products Association (IWPA) 55th Annual Convention at Loews, New Orleans.

A delegation of eleven members was led by Mr Tham Sing Khoo, the Deputy Chief Executive Officer of MTC. Participation of the Sarawak Timber Association (STA) was represented by its Senior Manager, Ms Annie Ting in this business visit.

The business visit aimed at (i) strengthening Malaysia's presence in the US timber market, (ii) facilitating Malaysian timber companies to promote their products through business networking with the key and potential US timber buyers, (iii) looking into remanufacturing opportunities with US manufacturers and (iv) exploring the possibilities of sourcing American hardwoods.



Photo: Map of the United States of America (USA)

The Malaysian delegation presented the overview of the Malaysian Timber Industry, the Malaysian Timber Certification Scheme and its latest development and Malaysian Timbers Usage and Application to the US potential importers in these three places.

The Malaysian delegation was amongst the 260 participants from 25 countries that attended the IWPA 55th Annual Convention held from 13 to 15 April 2011 in New Orleans, Louisiana. The 3-day event was packed with committee briefings, educational sessions, business networking activities, a visit to the Port of New Orleans and concluded with a dinner at the Audubon Aquarium. Some of the highlighted sessions held at the IWPA 55th Annual Convention were:

Environmental Protection Agency (EPA) – Rulemaking on Formaldehyde in Composite Wood Products

Ms Lynn Vendinello, Chief of Fibres and Organics Branch of the Office of Pollution Prevention and Toxics, briefed participants at the Convention on the background of Formaldehyde Standards for Composite Wood Products Act (FSCWA) and its implementation which will come into force by 1 January 2013.

The FSCWA became Title VI to the Toxic Substances Control Act (TSCA) and was signed into law on 7 July 2010. TSCA Title VI will establish the formaldehyde emission limits for hardwood plywood, particleboard, and medium-density fiberboard that are aligned with Phase II of the California Air Resources Board Air Toxics Control Measure regarding formaldehyde emissions from composite wood.

EPA has been tasked to issue supplementary regulations in a manner that ensures compliance with the formaldehyde emission standards.

In addition to promulgating the predetermined formaldehyde emission standards, EPA must also ensure compliance with these standards and that all imported composite wood products are to meet the TSCA Title VI emission standards as well as to enforce the TSCA Title VI regulations.

TSCA Title VI regulations cover:

- Labelling
- Chain-of-custody requirements
- Sell-through provisions (including a prohibition on stockpiling)
- Ultra low-emitting formaldehyde resins and no-added formaldehyde-based resins
- Finished goods
- Third-party testing and certification
- Auditing of and reporting for third-party certifiers
- Recordkeeping
- Enforcement
- Laminated products
- Exemptions for products and components containing de minimis amounts of composite wood products

ITC and US DOC Investigation and Implications for Flooring and Plywood Imports - What you Need to Know

Mr Jeffrey S Grimson, an attorney from Mowry & Grimson PLLC with significant experience working on antidumping investigations presented the overview of the International Trade Commission (ITC) injury investigation as well as highlighted the Department of Commerce (DOC) process for setting the import duty rates, conducting annual reviews to recalculate those duty rates, and making retroactive

COUNCIL (MTC) BUSINESS VISIT TO LOS ANGELES (USA)

adjustments for past import (bills or imports which were refused by Customs).

Open Forum

Open forum with the government officials (including Mr Crag Fedchock, Director of the International Capacity Development, United States Department Agriculture) and representatives of the Forest Legality Alliance and IWPA staff where participants sought clarification on the queries concerning Lacey Act declaration and what constituted "due care". It was clearly highlighted the importance of providing detailed information to avoid unnecessary retention for inspection.



The Malaysian delegation held a dialogue with the representatives and members of the National Hardwood Lumber Association (NHLA) on 18 April 2011 at the office of NHLA in Memphis, Tennessee. The NHLA was founded in 1898 to establish a uniform system of grading rules for the measurement and inspection hardwood lumber. It has 1250 members comprising companies and individuals that produce, use and sell North American hardwood lumber, or provide equipment, supplies or services to the hardwood industry. The Malaysian delegation was briefed on the NHLA grading rules for the measurement and inspection of hardwood and Cypress as well as the pulse of the hardwood market.



Majlis Kayu Kayan Malaysia (MTC) telah menganjurkan satu lawatan perniagaan ke Amerika Syarikat (AS) dari 9 hingga 20 April 2011. Program meliputi rangkaian perniagaan dengan pembeli-pembeli kayu dari AS yang berpotensi dan lawatan ke kilang di Los Angeles (California), New Orleans (Louisiana) dan Memphis (Tennessee) dan juga penyertaan dalam Konvensyen Tahunan ke-55 Persatuan Produk-produk Kayu Antarabangsa (IWPA) di Loews, New Orleans.

Lawatan perniagaan ini bertujuan untuk mengukuhkan kehadiran Malaysia dalam pasaran kayu kayan di AS, membantu syarikat-syarikat kayu kayan Malaysia bagi mempromosikan produk melalui rangkaian perniagaan dengan pembeli-pembeli kayu dari AS yang utama dan berpotensi, melihat peluang bekerjasama dalam pengeluaran bersama pekilang AS dan menjelajah kemungkinan dalam mencari sumber kayu keras Amerika.

Deligasi Malaysia merupakan antara 260 peserta dari 25 negara yang menghadiri Konvensyen Tahunan ke-55 IWPA tersebut yang bermula dari 13 hingga 15 April 2011 di New Orleans, Louisiana. Deligasi juga mengadakan sesi dialog dengan wakil-wakil dan ahli-ahli Persatuan Kayu Gergaji Kayu Keras Kebangsaan(NHLA) pada 18 April 2011 di pejabat NHLA di Memphis, Tennessee. Deligasi diberikan penerangan mengenai peraturan pengedaran NHLA untuk pengukuran dan pemeriksaan kayu keras dan Cypress serta keadaan pasaran kayu keras.

马来西亚木材理事会 (MTC) 于2011年4月9日至20日举办美国商务访问。马来西亚代表团分别前往洛杉矶 (加利福尼亚州), 新奥尔良 (路易斯安那州) 和孟菲斯 (田纳西州) 会见潜在买家与参观工厂。此外, 代表团也参与在新奥尔良, 罗斯举行的第55届国际材产公会 (IWPA) 年度会议。

该访问旨在加强马来西亚木材在美国的市场, 通过商业网络促进马来西亚木材公司与关键和潜在的美国木材买家会合, 探索与美国制造商的再制造机会及寻找美国硬木采购。

来自25个国家的260名代表当中包括马来西亚代表团于2011年4月13日至15日参与在路易斯安那州, 新奥尔良举办的第55届IWPA年度会议。马来西亚代表团与全美硬木材公会 (NHLA) 会员于2011年4月18日在田纳西州, 孟菲斯 NHLA办公室进行对话。马来西亚代表团听取关于NHLA硬木和丝柏木等级测量与检验规则以及硬木市场脉搏。

ROADSHOWS ON THE COLLATION OF INFORMATION PERTAINING TO CORPORATE SOCIAL RESPONSIBILITY (CSR) INITIATIVES OF STA MEMBER COMPANIES



Photo: Roadshow in Miri, Sibul and Bintulu (from left to right)

The Sarawak Timber Association (STA) is carrying out a six-month exercise on the collation of information pertaining to the Corporate Social Responsibility (CSR) initiatives of STA member companies. The objective of this exercise is to identify and document the CSR initiatives of STA member companies. The CSR exercise is expected to be completed by the end of September 2011.

The benefits of the CSR Exercise are to make known the efforts of member companies' CSR initiatives and to better promote member companies' image and reputation. The rationale of documenting member companies' CSR initiatives or practices are to provide a clearer and balanced picture of the CSR initiatives of member companies, and to identify the next probable course of action on CSR initiatives.

The road shows were held from 18, 19 and 20 April 2011 in Sibul, Bintulu and Miri respectively, and on 25 April 2011 in Kuching. The following were some of the outcomes from the four road shows:

- STA member companies' contributions to non-profit organisations or bursary programmes (not restricted to local community) can be listed in the CSR Form.
- Press releases can be submitted as supporting documents.
- The participants suggested STA to assist member companies in getting financial assistance/fund from the Government for their CSR initiatives or come up with proposals which will grant them incentives or tax reduction for their contributions.
- The participants were informed that in 2010 STA had received clarification from the Forest Department Sarawak and the Ministry of Planning and Resource Management (MPRM) that the FCAC is managed by the Board of Forest Concession Area (Rehabilitation & Development) Fund, which is chaired by the Chief Minister of Sarawak cum Minister of Planning and Resource Management. The MPRM also stated that from 1999 until 2009, a total of RM4.6 million has been utilised to fund community development projects such as the gravity feed water system, supply of water tanks, constructions of community hall and jetty and electricity supply in rural areas in Sarawak.
- The information of member companies' CSR initiatives can be back dated as long as they can provide the evidence i.e. the record and documents to substantiate the information provided.

The road shows had proven to be a useful avenue for the representatives to raise their concerns on the CSR exercise and their difficulties in filing up the CSR Form.

Overall, the participants from STA Member Companies gained better understanding on the information and substantiated documents to be provided to STA, the importance of keeping proper records of CSR initiatives or community development projects, and assured their cooperation for the CSR Exercise.

Persatuan Kayu Kayan Sarawak (STA) sedang menjalankan satu latihan selama enam bulan bagi pengumpulan informasi berkenaan Inisiatif-inisiatif Tanggungjawab Sosial Korporat (CSR) yang dilaksanakan oleh Syarikat-syarikat Ahli STA. Objektif latihan tersebut adalah untuk mengenalpasti dan mendokumentasikan inisiatif-inisiatif CSR oleh Syarikat-syarikat Ahli STA. Latihan CSR ini dijangka siap hujung bulan September 2011 ini.

Manfaat-manfaat daripada Latihan CSR tersebut ialah pengiktirafan usaha-usaha Syarikat-syarikat Ahli dalam inisiatif-inisiatif CSR dan peningkatan imej dan reputasi Syarikat-syarikat Ahli.

Siri jelajah telah diadakan dari 18 hingga 20 April 2011 di Sibul, Bintulu dan Miri, dan di Kuching pada 25 April 2011.

Siri jelajah ini terbukti suatu saluran yang berguna bagi wakil-wakil untuk menyuarakan kebimbangan mereka terhadap latihan CSR serta kemusykilan dalam melengkapkan Borang CSR tersebut setelah yakin bahawa segala maklumat akan terjamin sulit.

本会正在展开一项为期6个月的活动于整理由会员公司倡议的企业社会责任 (CSR) 相关资料。这旨于识别并记录会员公司的CSR倡议。此活动预计将于2011年9月底前完成。

这项活动将显示会员公司的CSR倡议并更好地促进会员公司的企业形象和声誉。巡回研讨会于2011年4月18日至20日各别在诗巫, 民都鲁及美里举行。2011年4月25日在古晋举行。

该巡回研讨会被证明是一个有效的途径供会员公司代表提出对该活动的关注及在填写CSR表格时所面对的疑问。CSR表格的资料将完全保证保密。

UNDERSTANDING THE BUSINESS CASE OF CORPORATE SOCIAL RESPONSIBILITY (CSR)

The Sarawak Development Institute (SDI) with the sponsorship from the Sarawak Economic Development Corporation (SEDC) and HSBC Bank Malaysia Berhad organised a talk on "Understanding the Business Case of Corporate Social Responsibility (CSR)" on 20 April 2011 at Grand Margherita Hotel, Kuching. The objective of the talk was to increase the understanding on CSR and how embedding it within corporate strategy can add to building corporate value in today's increasingly competitive business climate.

Datu Aloysius J Dris, the Chief Executive Officer of SDI in his welcoming address said that it has been proven through research statistics on the link between Corporate Responsibility (CR) and profit. It was reported that 68% from the 100 case studies conducted by CSR Europe showed a positive relationship between corporate social performance and financial performance. In Malaysia, the organisers of Starbiz-ICR Malaysia Corporate Responsibility Awards 2010 acknowledged that although Malaysian companies are making headways in CR, there is still much to learn from global CR leaders who have started much earlier. A new development which will promote the CR practices in Malaysia is the anticipated Sustainability Index, to be introduced by Bursa Malaysia for Malaysian public listed companies in 2012.

Meanwhile, Datuk Haji Talib Zulpilip, the Chairman of SEDC stated that a large section of the community needed to be assisted through CSR programmes. He mentioned that some local companies incorporate CSR directly into their business strategy and the common approach is philanthropy, such as monetary donations. He encouraged corporations, agencies, organisations and private

companies to offer their assistance in these matters.

The speaker, Ms Rikke Netterstrom is the Executive Director of CSR Asia, based in Malaysia. She has over 10 years' multi-sector experience in corporate responsibility strategy, stakeholder engagement and communications. She spoke on the:

1. 4 pillars of CSR

- Environment – Reduce environmental accidents and good environment practice
- Workplace – Provide basic labour standards
- Community – Look into the actual needs of the community
- Marketplace – Understand stakeholders' expectations

2. 7 Steps to CSR Excellence

- Lead – Board Director champion for CSR
- Drive – Senior Manager to lead and implement
- Take stock – Benchmark and gap analysis
- Listen – Stakeholder engagement
- Prioritise – Materiality matrix
- Quantify – Measure, set targets and Key Performance Indicator (KPI)
- Disclose – Report and communicate

Ms Netterstrom informed the participants that Bursa Malaysia is trying to foster better CSR in Malaysia by constructing the Environment, Social and Governance (ESG) Index in 2012 in order to attract more Socially Responsible Investment (SRI) funds into Malaysia.

Institut Pembangunan Sarawak (SDI) dengan tajaan daripada Perbadanan Pembangunan Ekonomi Sarawak (SEDC) dan Bank HSBC Malaysia Berhad, telah menganjurkan satu ceramah "Memahami Tanggungjawab Sosial Korporat (CSR) bagi Kes Perniagaan" pada 20 April 2011 di Hotel Grand Margherita, Kuching. Objektif seminar tersebut adalah untuk meningkatkan pemahaman tentang CSR dan bagaimana dengan menerapkan CSR dalam strategi korporat ini dapat membantu dalam pembinaan nilai korporat dalam persekitaran perniagaan yang semakin kompetitif pada masa kini.

Datu Aloysius J Dris, Ketua Pegawai Eksekutif SDI dalam ucapan alu-aluan beliau menyatakan bahawa ianya terbukti melalui statistik penyelidikan ke atas perhubungan antara Tanggungjawab Korporat (CR) dengan keuntungan. Satu perkembangan baru yang akan menggalakkan amalan CR di Malaysia ini ialah anggaran Indeks Ketahanan, yang akan diperkenalkan oleh Bursa Malaysia bagi syarikat-syarikat tersenarai awam Malaysia pada tahun 2012. Sementara itu, Datuk Haji Talib Zulpilip, Pengerusi SEDC menyatakan bahawa sebahagian besar komuniti tersebut perlu dibantu melalui program-program CSR. Beliau turut menggalakkan perbadanan, agensi, organisasi, serta syarikat swasta untuk memberikan bantuan dalam perkara ini.

砂拉越发展机构(SDI)在砂拉越经济发展机构(SEDC)和马来西亚汇丰银行有限公司的资助下于2011年4月20日假古晋, 大玛格丽特酒店举办了解商业企业社会责任(CSR)案例讲座会。这讲座会主要目的是提高参与者对CSR的认识和如何在现今充满竞争激烈的商业环境中结合企业战略以增长企业价值。

SDI首席执行官, 拿督阿洛伊修斯(译音)致词中称研究统计证明企业责任(CR)和盈利互相连接。马来西亚交易所将在2012年为上市公司推出持续性发展指数。这是一项有助于促进CR实践的新发展。与此同时, SEDC主席拿督达力(译音)声称很多社区需要通过CSR计划获得帮助。他鼓励集团, 机构, 组织和私人公司在这方面提供援助。

MALAYSIAN TIMBER COUNCIL (MTC) GLOBAL WOODMART 2012

The MTC Global WoodMart (MWG) 2012, second in the series after the highly successful inaugural MGW 2010, was launched by Tan Sri Bernard Dompok, the Minister of Plantation Industries and Commodities in a ceremony attended by representatives from the industry, timber-related associations and as well as government agencies on 4 April 2011 at the Kuala Lumpur Convention Centre. He was represented by Datin Paduka Nurmala Abdul Rahim, the Secretary-General of the Ministry of Plantation Industries and Commodities (MPIC).



The Minister, through his speech read by Datin Paduka Nurmala Abdul Rahim congratulated MTC for organising the second MGW which will be the event for one-stop selling, buying and networking trade fair for temperate, boreal and tropical timbers under one roof. According to him, MTC has also doubled the exhibition space for MGW 2012 to 2,000 m² and extended the show duration to three days. Representatives from 13 companies and organisations which had confirmed participation in MGW 2012 signed Letters of Understanding during the launch witnessed by Datin Paduka Nurmala Abdul Rahim, Datuk Aaron Ago Dagang, the Chairman of MTC and Mr Cheah Kam Huan the CEO of MTC.

Datuk Aaron Ago Dagang, the Chairman of MTC, in his welcoming remarks, said that MTC is confident that the MGW 2012 will be another outstanding and successful event, based on the positive feedback from exhibitors and visitors.

MTC is currently carrying out international promotional efforts through its offices in London, Shanghai and Dubai to bring prospective buyers from traditional markets in Europe, the USA, Japan and Australia, as well as emerging markets such as China, Russia and countries in Eastern Europe, the Middle East and Latin America to the MGW 2012. MGW 2012 will feature a wide selection of tropical and temperate hardwood and softwood products such as logs, sawntimber, plywood and panel products, wooden flooring, wooden decking, doors and windows, mouldings and furniture components.

For more information on the MTC Global WoodMart (MWG) 2012, please visit this website www.globalwoodmart.my

MTC Global WoodMart (MWG) 2012, siri yang kedua ini berikutan kejayaan penganjuran siri pertamanya, MGW 2010, telah dilancarkan oleh Tan Sri Bernard Dompok, Menteri Perusahaan Perladangan dan Komoditi pada 4 April 2011 di Pusat Konvensyen Kuala Lumpur, di mana majlis tersebut dihadiri oleh wakil-wakil dari industri, persatuan-persatuan yang berkaitan dengan kayu kayan serta agensi-agensi kerajaan

Menteri dalam ucapan beliau yang disampaikan oleh Datin Paduka Nurmala Abdul Rahim, mengucapkan tahniah kepada MTC bagi menganjurkan MGW yang kedua ini di mana ia menjadi suatu acara untuk menjual, membeli dan rangkaian pameran perdagangan setempat bagi kayu kayan temperate, boreal dan tropika di bawah satu bumbung.

基于2010年MTC全球 WoodMart (MWG) 成功举办, 2012年MWG由种植与原产业部部长, 丹斯里柏纳东博于2011年4月4日在吉隆坡会议中心推展。工业与木材相关公会及政府机构代表受邀出席该推展礼。

拿汀巴督卡努马拉 (译音) 在代部长致词中恭贺马来西亚木材理事会 (MTC) 举办第二届MWG。MWG 2012是温, 寒及热带木材一站式买卖和联系贸易展。

NOTIFICATION ON ACTING CONSUL GENERAL OF THE REPUBLIC OF INDONESIA

Please be informed that Bapak Rafail Walangitan, the Acting Consul General of The Republic of Indonesia has been posted back to the Ministry of Foreign Affairs, the Republic of Indonesia in Jakarta as of 30 April 2011. He will be replaced temporarily by Bapak Joko Suprpto, of the Republic of Indonesia, Kuching.

Dimaklumkan bahawa Bapak Rafail Walangitan, Pemangku Konsul Besar Republik Indonesia telah ditukarkan kembali ke Kementerian Perhubungan Luar Negara, Republik Indonesia di Jakarta mulai 30 April 2011. Beliau akan digantikan buat sementara waktu oleh Bapak Joko Suprpto, Republik Indonesia, Kuching.

印尼驻古晋领事馆代领事,拉菲瓦林丹先生(译音)于2011年4月30日卸任后已调回印尼雅加达外交部。其职位暂由佐戈苏拉栋先生(译音)接任。

FORESTS (TRAINED WORKMEN) RULES

Section 54B of the Forests Ordinance (also referred to as Section 7 of the Forests (amendment) Ordinance 2011) came into force on 1 July 2010.

Sarawak Timber Association have been informed by Forest Department Sarawak that the **amended** Forests (Trained Workmen) Rules have been sent to the Ministry of Planning and Resources Management for submission to the Majlis Mesyuarat Kerajaan Negera (MMKN) for approval. If endorse and approved by MMKN, these Rules will be gazetted and shall take effect from 1 July 2011.

Seksyen 54B Ordinan Hutan (juga dirujuk sebagai Seksyen 7 Ordinan Hutan (pindaan) 2011) akan dikuatkuasakan pada 1 Julai 2010.

Persatuan Kayu Kayan Sarawak telah diberitahu oleh Jabatan Hutan Sarawak bahawa **Pindaan** Peraturan Hutan (Pekerja Terlatih) ini telah diserahkan kepada Kementerian Perancangan dan Pengurusan Sumber untuk diserahkan kepada Majlis Mesyuarat Kerajaan Negera (MMKN) untuk mendapatkan kelulusan. Sekiranya dikuatkuasakan dan diluluskan oleh MMKN, Peraturan ini akan diwartakan dan akan berkuatkuasa dari 1 Julai 2011.

森林法令第54B條文或2011森林法令(修正)第7條文于2010年7月1日起生效。

砂州森林局告知本会修正森林法令(培训员工)已递交予规划和资源管理部。该部门提交予州行政议会(MMKN)批准。如MMKN赞同和批准通过,此修正法令将于2011年7月1日起施行。

ARE YOU MISSING OUT ON TIMBER- RELATED NEWS AND TRADE ENQUIRIES?

STA Grapevine is an electronic mailing List created and managed by the STA Secretariat to deliver news and information related to timber and timber trade (market news, seminar papers, technical/research information, statistics, timber trade enquiries and etc) in a more efficient way.

This service is exclusively for staff of STA member companies only. Sign up now by sending your request to grapevine@sta.org.my stating your full name, designation, name of company, address, telephone no, fax no and most importantly your email address.

STA Grapevine adalah satu senarai mel elektronik yang diwujudkan dan diurus oleh Sekretariat STA untuk menyampaikan berita-berita dan informasi yang berkaitan dengan kayu kayan dan perdagangan kayu kayan. Perkhidmatan ini adalah eksklusif untuk kakitangan syarikat-syarikat ahli STA sahaja.

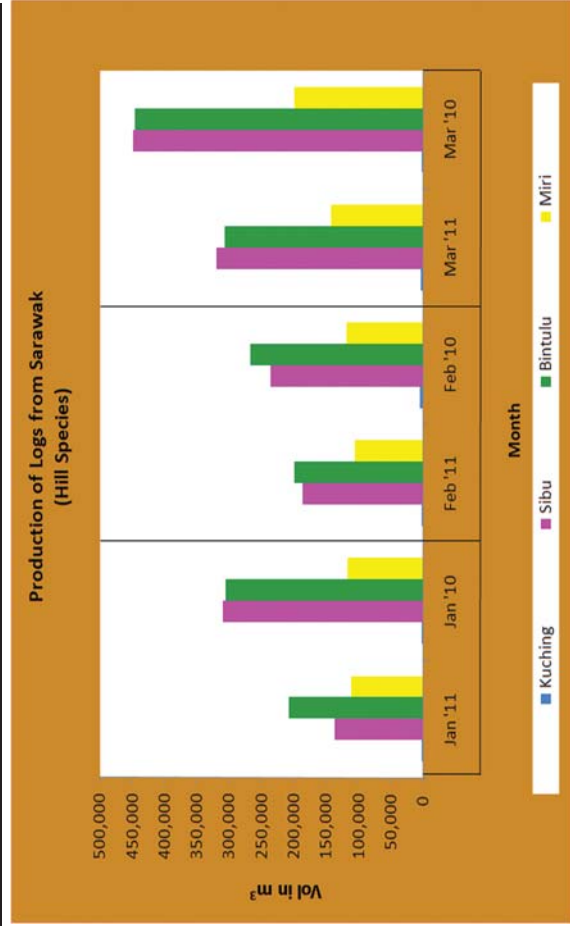
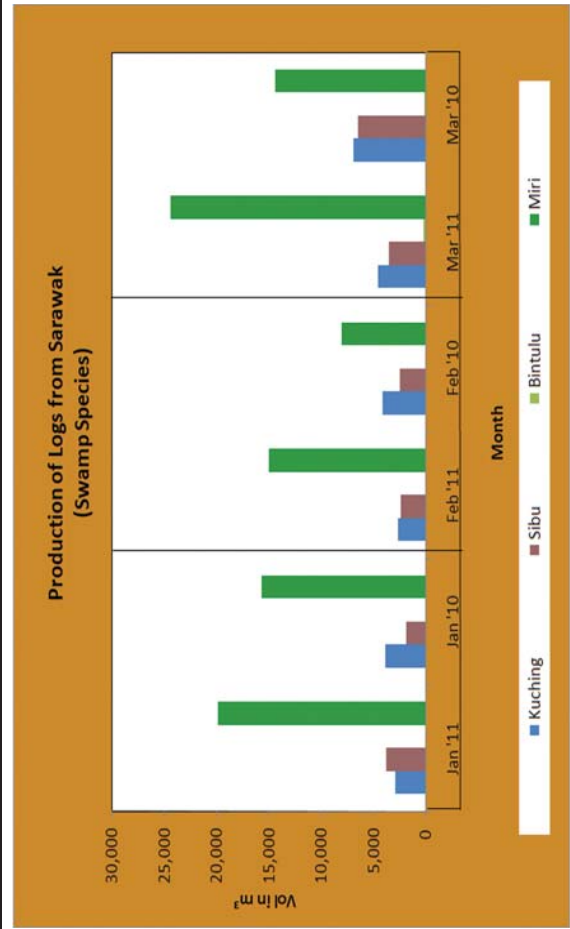
STA Grapevine是一项由本会秘书处创建和管理的电子邮寄讯息服务。这项服务是专为本会会员公司的职员提供木材和木材贸易相关新闻和信息。

PRODUCTION OF LOGS BY SECTION FROM SARAWAK- HILL AND SWAMP SPECIES

PENGELUARAN BALAK MENGIKUT BAHAGIAN DARI SARAWAK - SPESIS HUTAN BUKIT DAN HUTAN PAYA

砂拉越各区域原木生产量- 丘陵与沼泽地树种

Section	January '11	January '10	February '11	February '10	March '11	March '10	Jan - Mar '11	Jan - Mar '10
	Vol (m ³)	Vol (m ³)	Vol (m ³)	Vol (m ³)	Vol (m ³)	Vol (m ³)	Vol (m ³)	Vol (m ³)
Kuching (Hill)	2,825	2,509	2,198	5,942	4,837	2,321	9,861	10,772
(Swamp)	2,942	3,940	2,700	4,178	4,635	6,914	10,277	15,032
Sibu (Hill)	136,762	309,740	186,345	237,179	320,723	448,920	643,830	995,838
(Swamp)	3,856	1,919	2,455	2,547	3,586	6,517	9,898	10,983
Bintulu (Hill)	208,583	305,939	199,538	267,958	307,464	446,091	715,585	1,019,988
(Swamp)	---	---	---	---	249	179	249	179
Miri (Hill)	112,236	118,212	106,329	119,459	142,634	200,280	361,199	437,952
(Swamp)	19,874	15,720	15,027	8,069	24,420	14,445	59,321	38,234
Subtotal (Hill)	460,406	736,400	494,410	630,537	775,658	1,097,612	1,730,474	2,464,549
(Swamp)	26,672	21,579	20,182	14,794	32,890	28,055	79,745	64,428
Total:	487,079	757,978	514,592	645,332	808,548	1,125,667	1,810,219	2,528,977



Source : Sarawak Forestry Corporation Sdn Bhd

PRODUCTION OF LOGS BY HILL SPECIES FROM SARAWAK
PENGELUARAN BALAK MENGIKUT SPESIS HUTAN BUKIT DARI SARAWAK
砂拉越丘陵地树种之原木生产量

Hill Species	November '10	December '10	January '11	February '11	March '11	Jan - Mar '11
	Vol (m ³)	Vol (m ³)	Vol (m ³)	Vol (m ³)	Vol (m ³)	Vol (m ³)
Bindang	15,562	16,729	12,276	13,714	17,495	43,486
Meranti	320,267	316,022	163,382	184,227	292,388	639,997
Kapur	38,971	37,985	22,904	22,730	32,938	78,571
Keruing	32,732	28,806	17,634	17,512	25,697	60,843
Sepetir	3,318	3,433	1,844	1,855	3,011	6,710
Selangan Batu	22,014	26,411	12,117	12,000	17,766	41,883
Nyatoh	17,230	15,904	10,040	8,186	13,458	31,684
Other species	403,649	408,166	220,210	234,187	372,904	827,301
Total:	853,743	853,455	460,406	494,410	775,658	1,730,474

PRODUCTION OF LOGS BY SWAMP SPECIES FROM SARAWAK
PENGELUARAN BALAK MENGIKUT SPESIS HUTAN PAYA DARI SARAWAK
砂拉越沼泽地树种之原木生产量

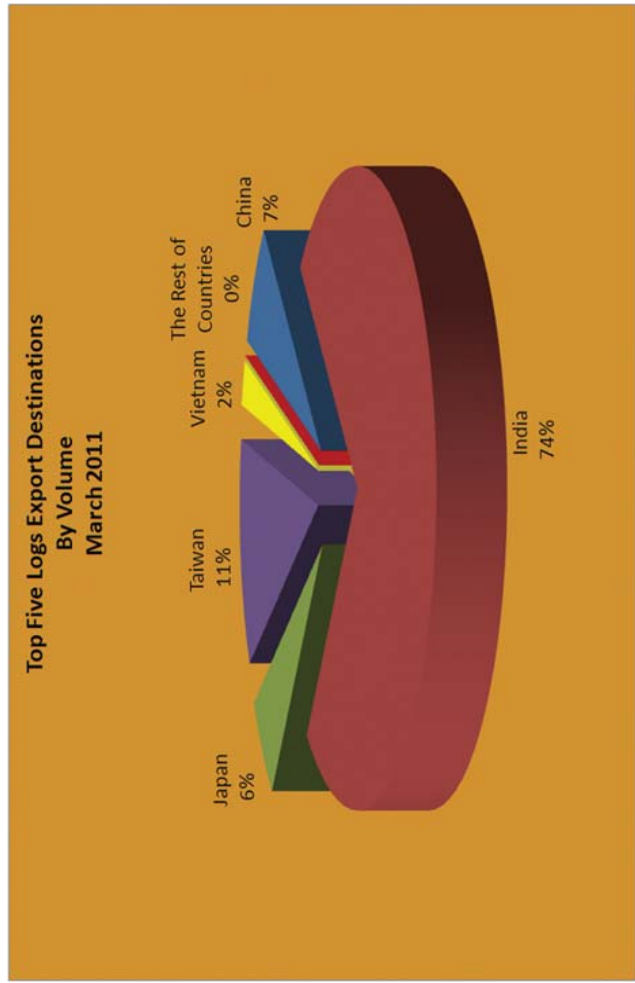
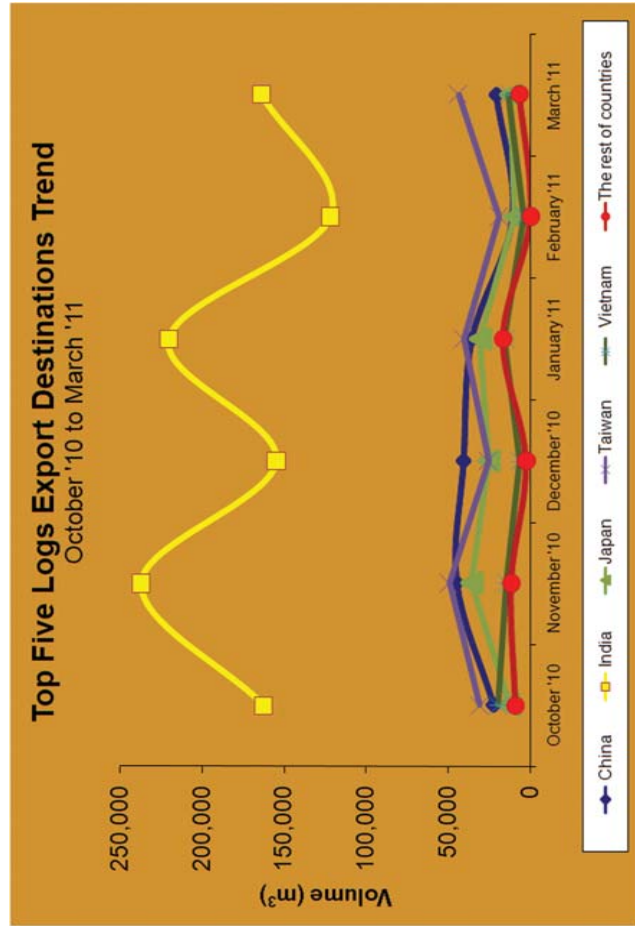
Swamp Species	November '10	December '10	January '11	February '11	March '11	Jan - Mar '11
	Vol (m ³)	Vol (m ³)	Vol (m ³)	Vol (m ³)	Vol (m ³)	Vol (m ³)
Ramin	776	648	1,016	799	616	2,431
Jongkong	819	766	555	485	417	1,457
Sepetir	295	588	340	112	317	769
Alan	3,788	3,798	3,494	2,061	5,762	11,317
Kapur	843	1,950	1,125	517	1,139	2,781
Keruing	129	253	66,720	95	45	206
Meranti	3,276	3,931	3,887	3,039	3,478	10,404
Other species	16,701	17,038	16,188	13,075	21,116	50,379
Total:	26,628	28,973	26,672	20,182	32,890	79,745

Source : Sarawak Forestry Corporation Sdn Bhd

EXPORT OF LOGS BY DESTINATION FROM SARAWAK

EKSPORT BALAK MENGIKUT DESTINASI DARI SARAWAK 砂拉越至各目的地之原木出口量

Country of Destination	November '10	December '10	January '11	February '11	March '11	Jan - Mar '11
	Vol (m ³)	Vol (m ³)	Vol (m ³)	Vol (m ³)	Vol (m ³)	Vol (m ³)
China 中国	44,881	40,640	35,646	10,637	20,618	66,901
India 印度	237,243	154,849	220,481	121,930	163,757	506,169
Indonesia 印尼	---	---	3,956	---	---	3,956
Japan 日本	35,795	25,340	30,503	9,420	11,899	51,822
Korea 韩国	5,738	2,771	5,837	---	6,698	12,535
Taiwan 台湾	49,389	25,530	40,691	18,851	43,896	103,438
Thailand 泰国	5,643	---	6,520	---	---	6,520
Vietnam 越南	14,366	6,248	15,432	3,729	13,001	32,162
Other countries 其他国家	389	---	308	---	---	308
Total:	393,445	255,378	359,374	164,567	259,869	783,811

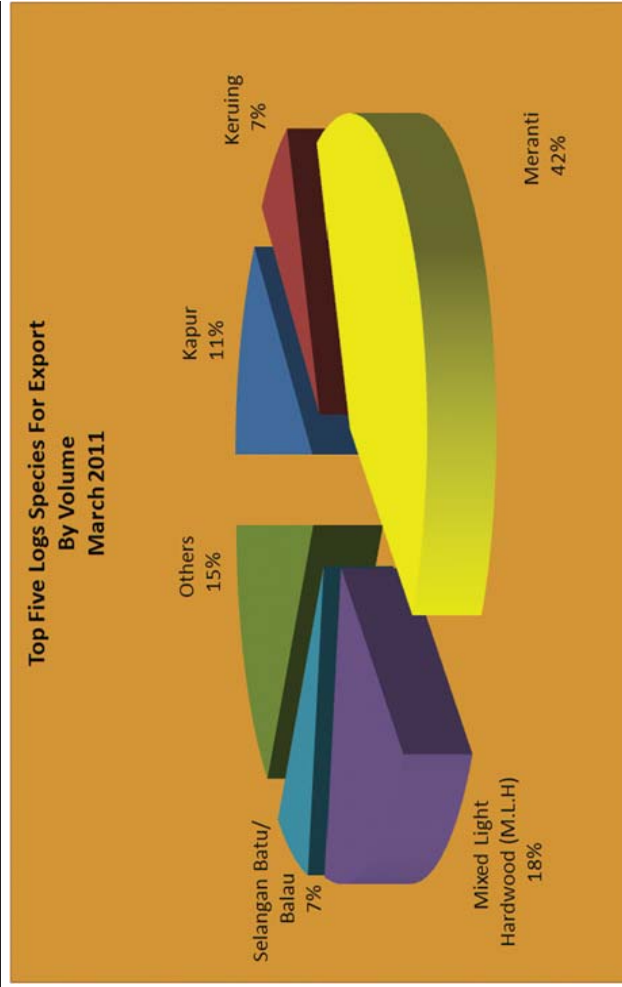
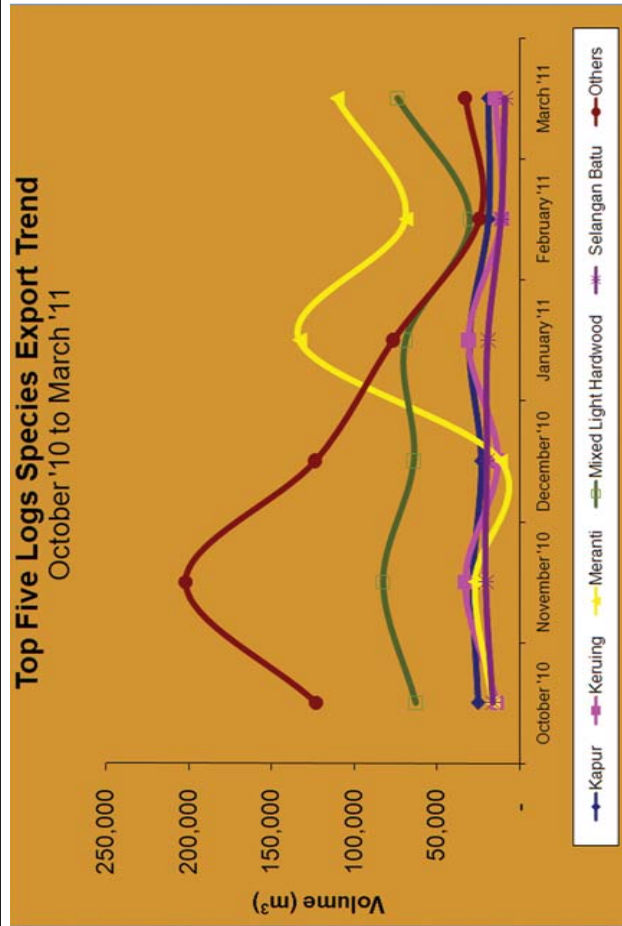


Source : Sarawak Timber Industry Development Corporation

EXPORT OF LOGS BY SPECIES FROM SARAWAK

EKSPORT BALAK MENGIKUT SPESIS DARI SARAWAK 砂拉越原木树种出口量

SPECIES	November '10	December '10	January '11	February '11	March '11	Jan - Mar '11
	Vol (m ³)	Vol (m ³)	Vol (m ³)	Vol (m ³)	Vol (m ³)	Vol (m ³)
Bindang/ Damar Minyak/ Agathis	7,714	5,628	10,249	5,070	6,950	22,270
Kapur	28,609	23,315	30,817	18,793	18,960	68,570
Keruing	32,760	13,176	20,354	10,907	14,835	46,096
Menggris	10,227	5,862	5,256	3,135	6,299	14,691
Meranti	27,267	11,717	133,201	69,067	110,691	312,959
Mixed Light Hardwood	82,557	63,985	68,948	30,092	73,848	172,888
Nyatoh	1,403	520	2,130	101	1,672	3,903
Red Meranti	118,708	68,959	38,677	6,542	8,652	53,871
Resak	3,928	2,823	3,638	2,747	1,737	8,123
Selangan Batu	20,461	19,657	19,196	11,288	8,702	39,186
Others	59,812	39,736	26,908	6,824	7,523	41,255
Total:	393,445	255,378	359,374	164,567	259,869	783,811

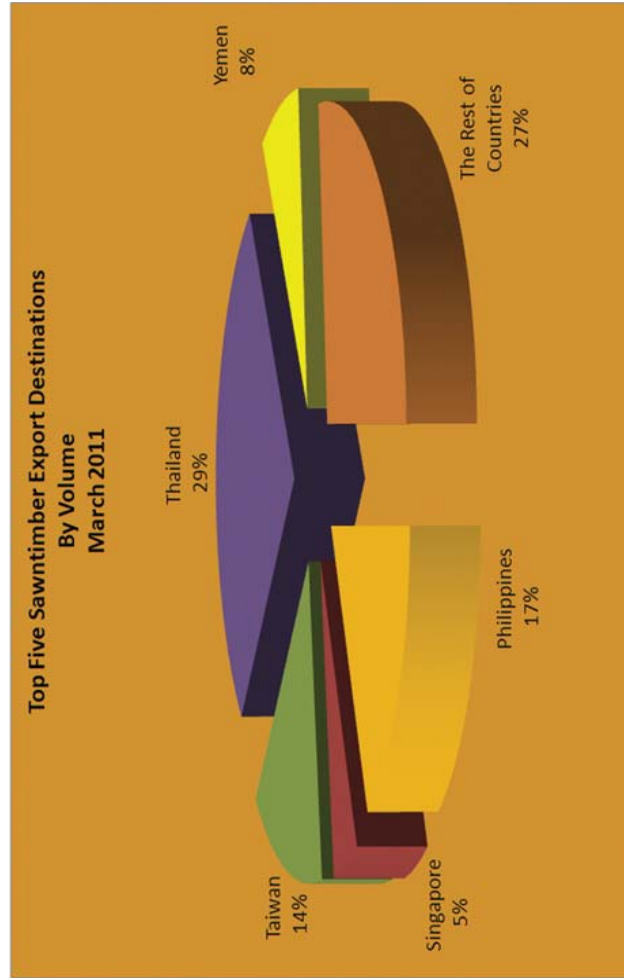
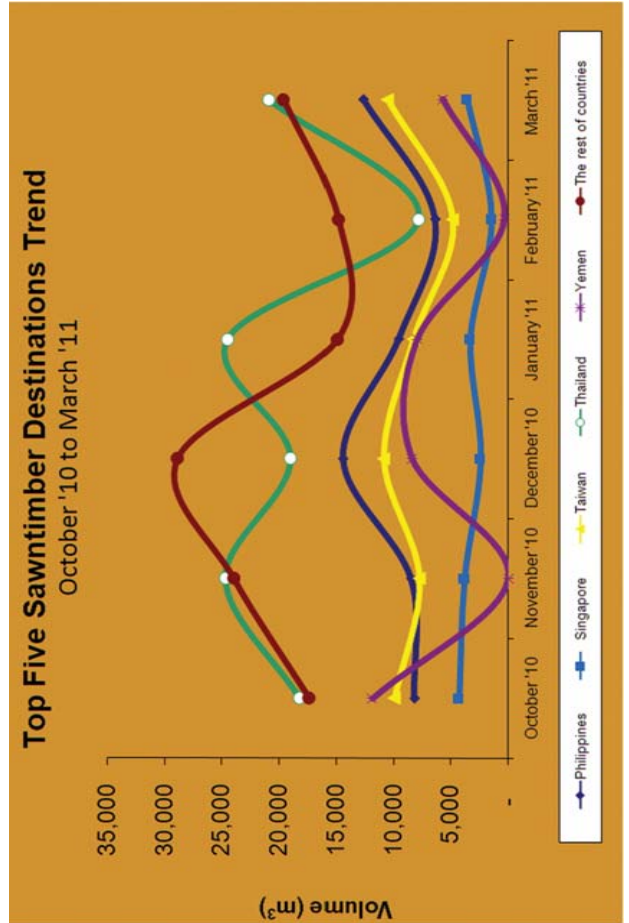


Source : Sarawak Timber Industry Development Corporation

EXPORT OF SAWNTIMBER BY DESTINATION FROM SARAWAK

EKSPORT KAYU BERGAGAJI MENGIKUT DESTINASI DARI SARAWAK 砂拉越至各目的地之锯木出口量

Country of Destination	November '10	December '10	January '11	February '11	March '11	Jan - Mar '11
	Vol (m³)	Vol (m³)	Vol (m³)	Vol (m³)	Vol (m³)	Vol (m³)
China 中国	5,017	4,349	1,556	3,162	2,009	6,727
Hong Kong 香港	414	667	1,338	631	1,792	3,761
Korea 韩国	1,468	4,523	1,784	1,571	1,928	5,283
Philippines 菲律宾	1,881	2,494	640	2,026	1,794	4,460
South Africa 南非	8,518	14,463	9,594	6,407	12,692	28,693
Singapore 新加坡	1,002	4,427	301	---	3,541	3,841
Taiwan 台湾	3,846	2,428	3,334	1,481	3,617	8,431
Thailand 泰国	7,804	10,909	8,308	4,880	10,599	23,788
United Arab Emirates 阿拉伯联合酋长国	24,657	18,984	24,447	7,880	20,926	53,253
Oman 奥曼	---	8,429	7,977	346	5,738	14,062
Other countries 其他国家	14,174	12,416	9,293	7,462	8,548	25,302
Total:	68,782	84,089	68,572	35,846	73,183	177,601

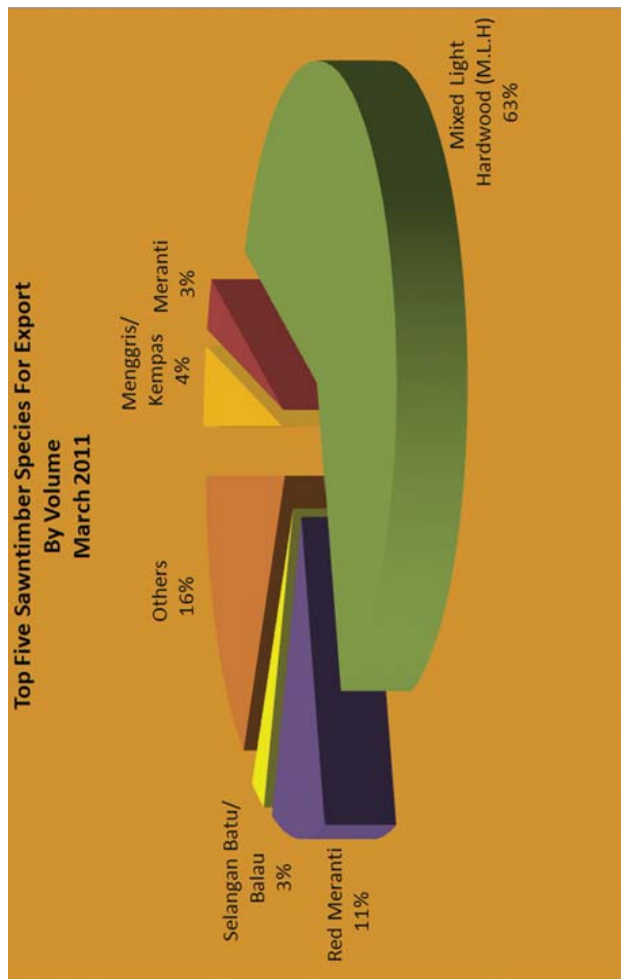
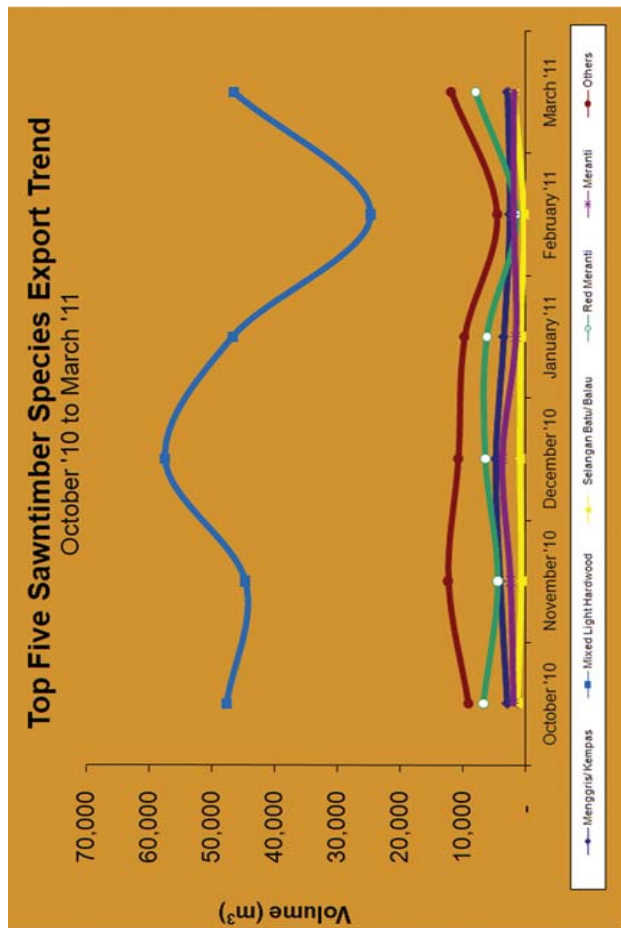


Source : Sarawak Timber Industry Development Corporation

EXPORT OF SAWNTIMBER BY SPECIES FROM SARAWAK

EKSPORT KAYU BERGEGAJI MENGIKUT SPESIS DARI SARAWAK 砂拉越锯木树种出口量

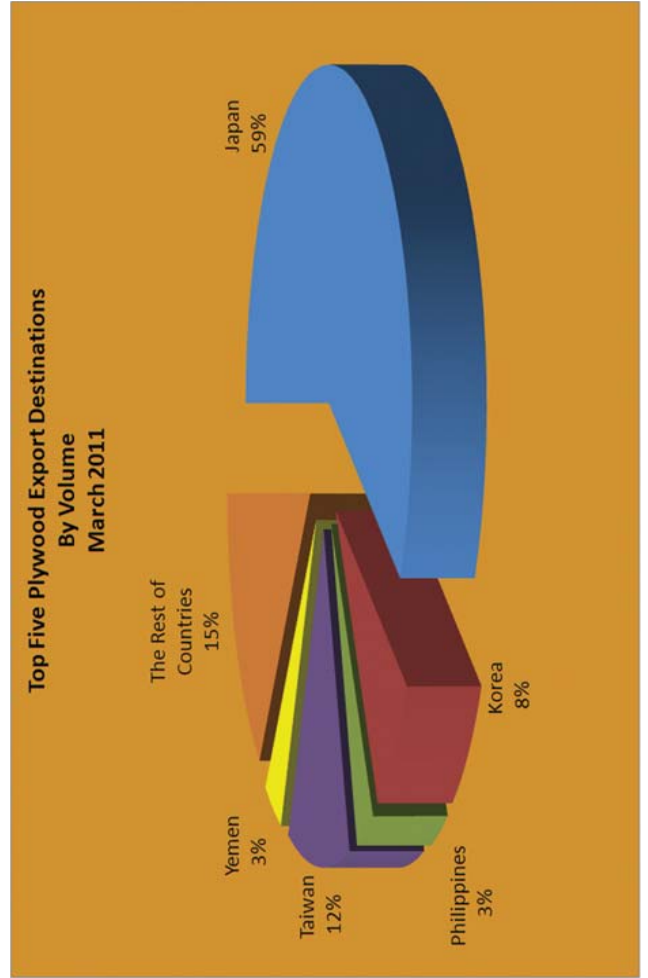
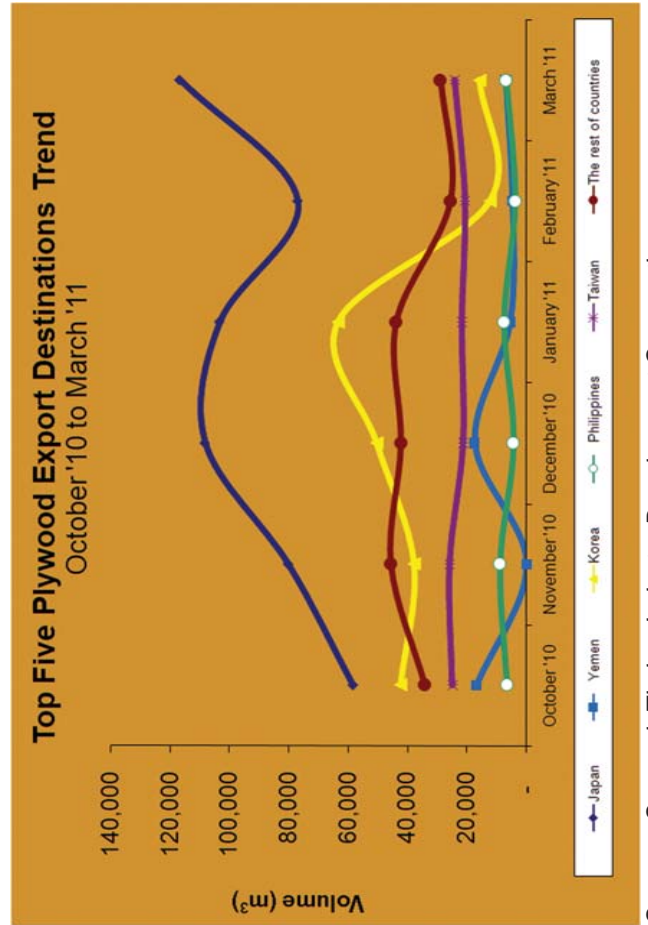
SPECIES	November '10	December '10	January '11	February '11	March '11	Jan - Mar '11
	Vol (m ³)	Vol (m ³)	Vol (m ³)	Vol (m ³)	Vol (m ³)	Vol (m ³)
Kapur	1,656	2,126	1,252	912	1,370	3,534
Keruing	2,410	1,306	398	528	1,242	2,168
Mixed Light Hardwood	44,629	57,421	46,662	24,706	46,509	117,877
Mixed Medium Hardwood	873	814	1,976	868	1,394	4,238
Menggris/ Kempas	4,125	4,792	3,521	2,575	2,946	9,043
Meranti	2,480	3,750	1,647	2,030	1,930	5,606
Meranti Bakau	4,473	6,426	6,182	1,621	7,946	15,749
Red Meranti	737	948	830	345	1,955	3,131
Selangan Batu/ Balau	946	2,179	584	452	1,561	2,597
Ubah/Kelat	1,616	1,599	2,507	280	1,781	4,568
Others	4,837	2,729	3,014	1,527	4,548	9,089
Total:	68,782	84,089	68,572	35,846	73,183	177,601



Source : Sarawak Timber Industry Development Corporation

EXPORT OF PLYWOOD BY DESTINATION FROM SARAWAK
EKSPORT PAPAN LAPIS MENGIKUT DESTINASI DARI SARAWAK 砂拉越至各目的地之合板出口量

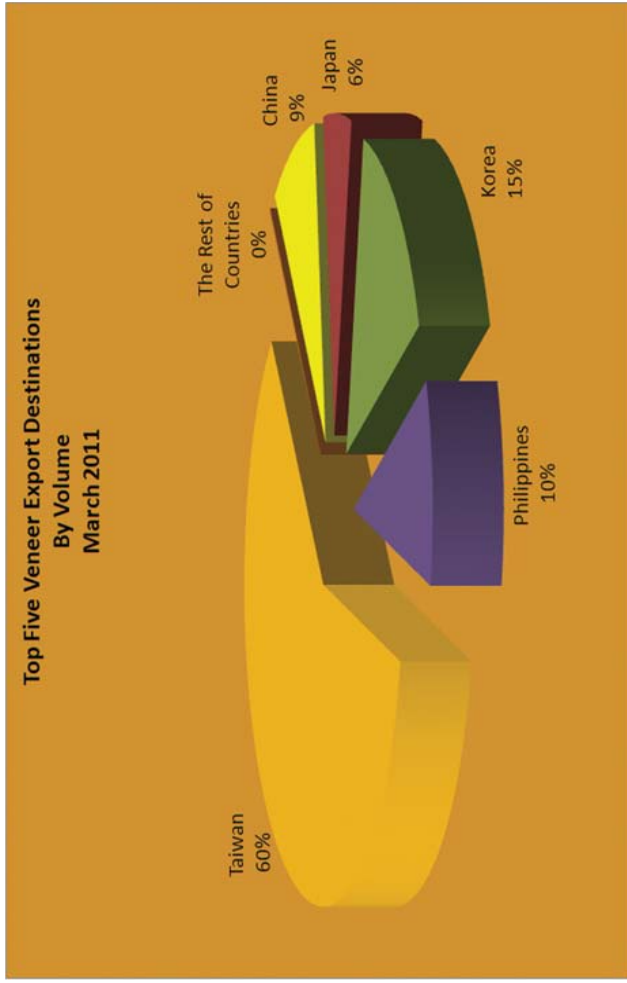
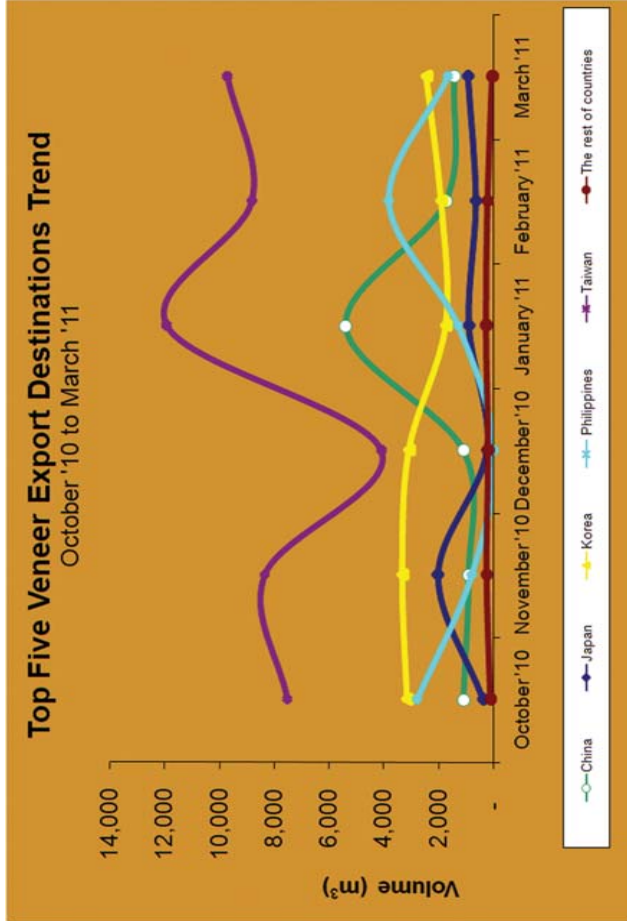
Country of Destination	November '10	December '10	January '11	February '11	March '11	Jan - Mar '11
	Vol (m ³)	Vol (m ³)	Vol (m ³)	Vol (m ³)	Vol (m ³)	Vol (m ³)
Australia 澳洲	2,882	2,133	3,305	2,071	3,150	8,526
China 中国	8,177	5,518	3,188	3,470	6,197	12,855
Oman 奥曼	80,198	108,285	103,365	76,974	116,823	297,162
Japan 日本	5,761	3,512	2,008	4,109	5,055	11,172
Hong Kong 香港	37,863	50,526	63,531	12,232	15,766	91,529
Korea 韩国	8,863	4,193	7,476	3,656	6,739	17,870
Philippines 菲律宾	25,751	21,131	21,541	20,485	24,019	66,046
Taiwan 台湾	3,428	9,879	1,651	6,933	2,740	11,323
United Arab Emirates 阿拉伯联合酋长国	1,802	7,688	7,174	1,236	2,166	10,577
Yemen 也门	---	17,286	5,491	4,687	6,937	17,115
Other countries 其他国家	23,672	13,633	26,593	7,786	9,598	43,976
Total:	198,398	243,783	245,324	143,640	199,189	588,152



Source : Sarawak Timber Industry Development Corporation

EXPORT OF VENEER BY DESTINATION FROM SARAWAK
EKSPORT VENIR MENGIKUT DESTINASI DARI SARAWAK 砂拉越至各目的地之单板出口量

Country of Destination	November '10	December '10	January '11	February '11	March '11	Jan - Mar '11
	Vol (m ³)	Vol (m ³)	Vol (m ³)	Vol (m ³)	Vol (m ³)	Vol (m ³)
Australia 澳洲	236	157	258	220	42	520
China 中国	910	1,107	5,406	1,746	1,435	8,587
Finland 芬兰	---	42	---	---	---	---
Japan 日本	2,037	226	898	642	933	2,473
Korea 韩国	3,321	3,082	1,736	1,904	2,444	6,085
Philippines 菲律宾	802	---	1,304	3,837	1,675	6,816
Singapore 新加坡	20	---	21	---	---	21
Taiwan 台湾	8,363	4,096	11,929	8,828	9,716	30,472
Thailand 泰国	---	---	---	---	---	---
Other countries 其他国家	---	---	---	---	---	---
Total:	15,679	8,710	21,552	17,177	16,244	54,973

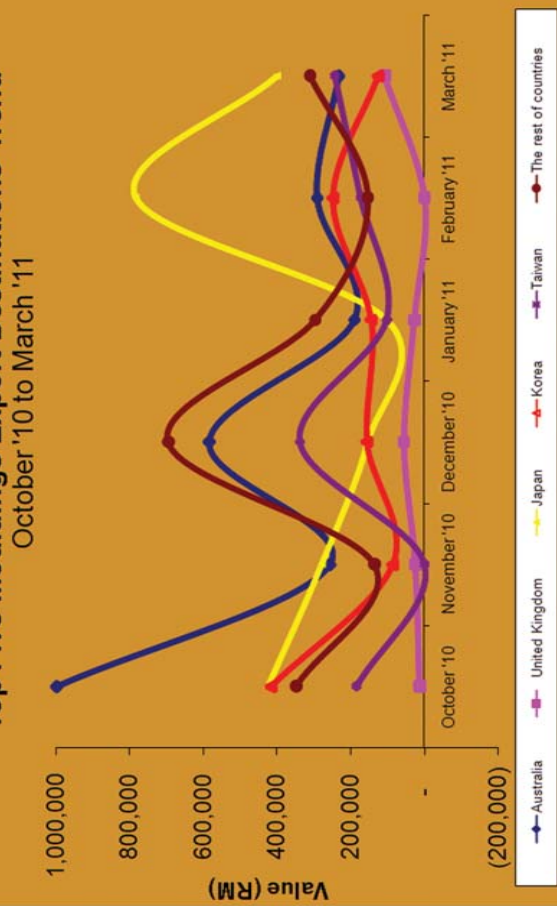


Source : Sarawak Timber Industry Development Corporation

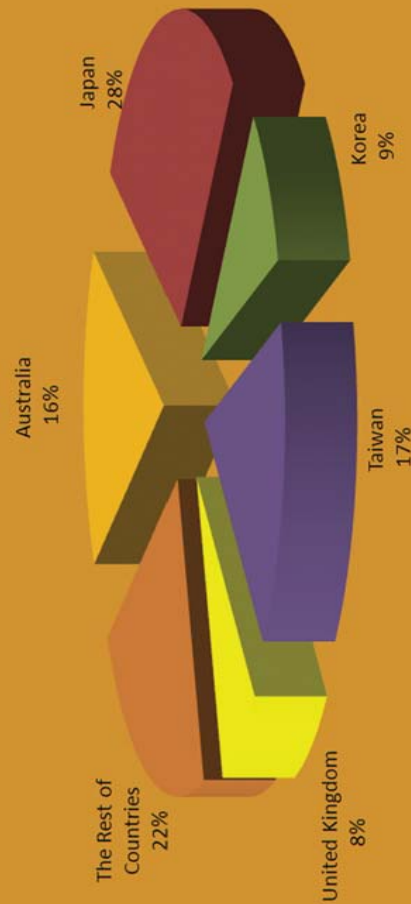
EXPORT VALUE OF MOULDINGS BY DESTINATION FROM SARAWAK
NILAI EKSPORT KAYU KUMAI MENGIKUT DESTINASI DARI SARAWAK 砂拉越至各目的地之制模出口值

Country of Destination	November '10	December '10	January '11	February '11	March '11	Jan - Mar '11
	Value (RM)	Value (RM)	Value (RM)	Value (RM)	Value (RM)	Value (RM)
Australia 澳洲	257,113	583,194	190,621	290,890	232,357	713,868
Belgium 比利时	---	---	95,822	---	96,268	192,090
Canada 加拿大	---	82,558	42,625	---	60,815	103,440
Japan 日本	277,815	154,261	102,216	783,894	398,693	1,284,804
Korea 韩国	85,939	154,634	144,241	248,387	124,635	517,263
Netherlands 荷兰	---	---	---	---	29,582	29,582
Singapore 新加坡	---	32,545	---	---	74,778	74,778
Taiwan 台湾	---	338,360	101,670	171,746	243,911	517,326
Turkey 土耳其	---	---	---	---	21,333	21,333
U.S.A. 美国	23,633	55,919	27,635	---	108,554	136,189
Other countries 其他国家	135,382	580,982	157,981	154,057	28,106	340,142
Total:	779,882	1,982,454	862,811	1,648,973	1,419,032	3,930,815

Top Five Mouldings Export Destinations Trend



Top Five Mouldings Export Destinations By Value March 2011



Source : Sarawak Timber Industry Development Corporation

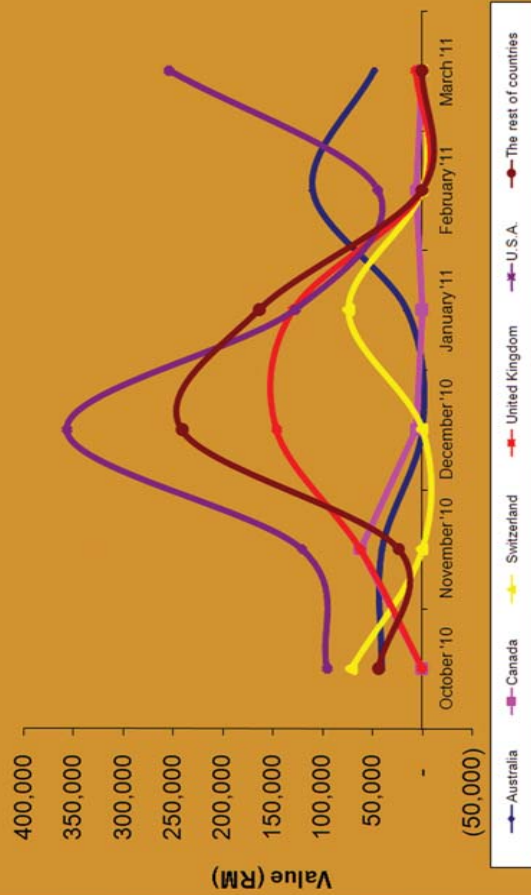
EXPORT VALUE OF DOWELS BY DESTINATION FROM SARAWAK

NILAI EKSPORT KAYU PENETAP MENGIKUT DESTINASI DARI SARAWAK 砂拉越至各目的地之圆棍出口值

Country of Destination	November '10	December '10	January '11	February '11	March '11	Jan - Mar '11
	Value (RM)	Value (RM)	Value (RM)	Value (RM)	Value (RM)	Value (RM)
Australia 澳洲	40,628	---	15,876	110,305	48,282	174,463
Canada 加拿大	62,140	5,812	---	5,897	---	5,897
India 印度	---	---	76,529	---	---	76,529
Japan 日本	---	26,493	---	---	---	---
Netherlands 荷兰	---	---	86,734	---	---	86,734
South Africa 南非	---	214,827	---	---	---	---
Switzerland 瑞士	---	---	73,812	---	---	73,812
Taiwan 台湾	23,524	---	---	---	---	---
United Kingdom 联合王国	62,281	146,308	129,237	---	6,637	135,874
U.S.A. 美国	120,517	356,997	127,414	44,223	254,363	426,000
Other countries 其他国家	---	---	---	---	---	---
Total:	309,090	750,437	509,601	160,425	309,282	979,308

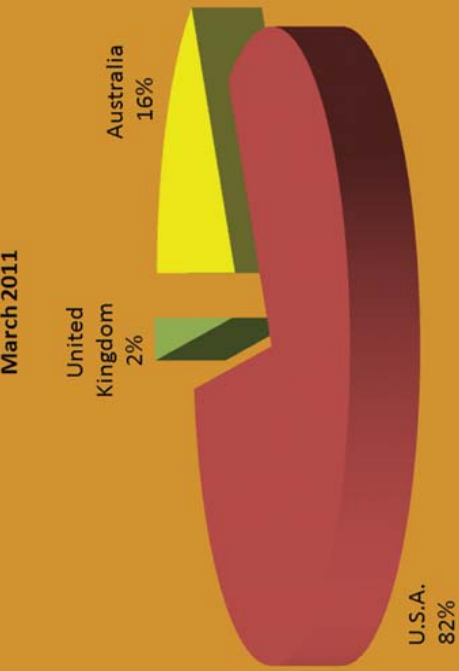
Top Five Dowels Export Destinations Trend

October '10 to March '11



Top Three Dowels Export Destinations

By Value
March 2011

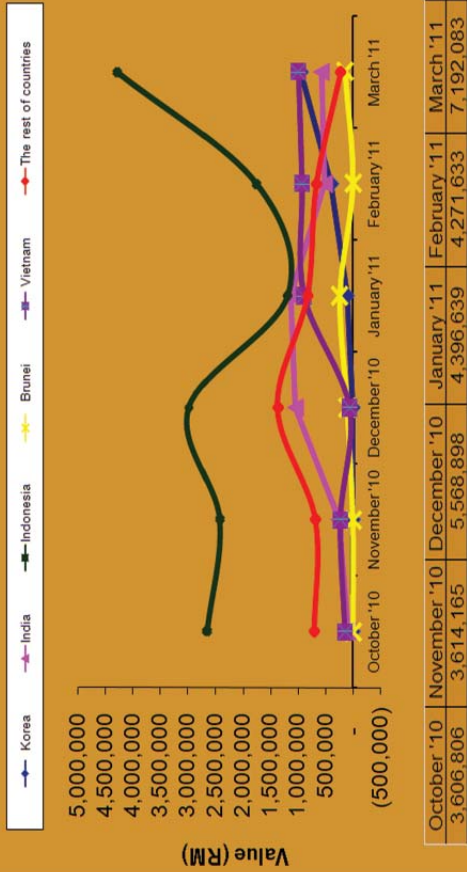


EXPORT VALUE OF PARTICLEBOARD BY DESTINATION FROM SARAWAK

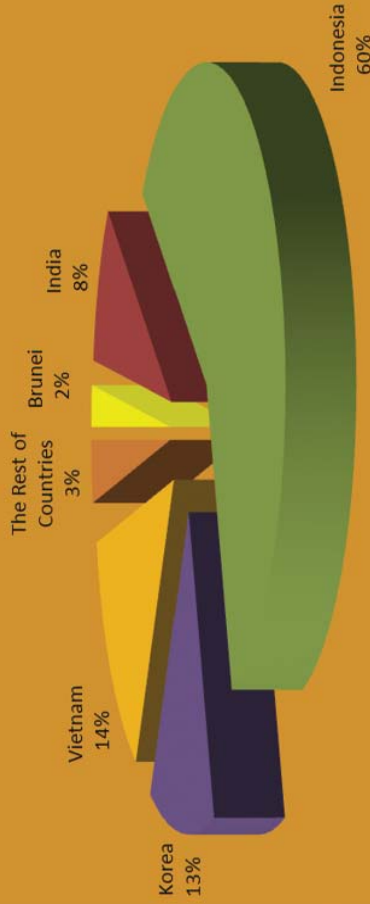
NILAI EKSPORT PAPAN SERPAI MENGIKUT DESTINASI DARI SARAWAK

砂拉越至各目的地之膠合板出口值

Top Five Particleboard Export Destinations Trend
October '10 to March '11



Top Five Particleboard Export Destinations
By Value
March 2011

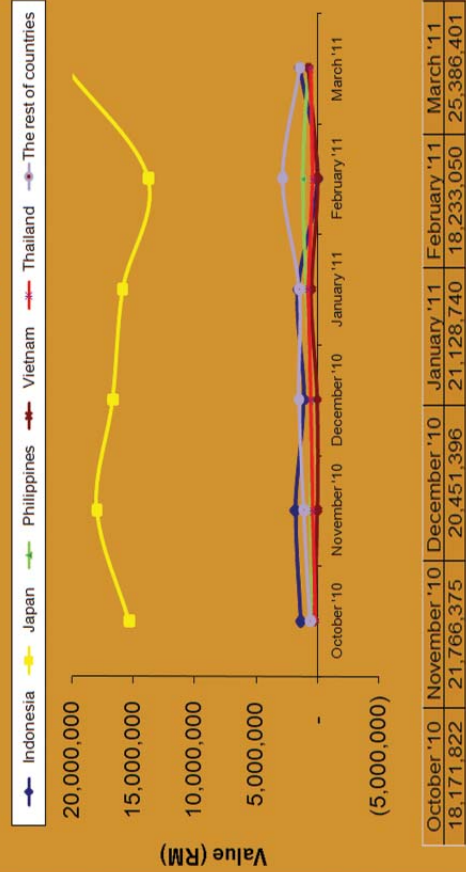


EXPORT VALUE OF MEDIUM DENSITY FIBREBOARD BY DESTINATION FROM SARAWAK

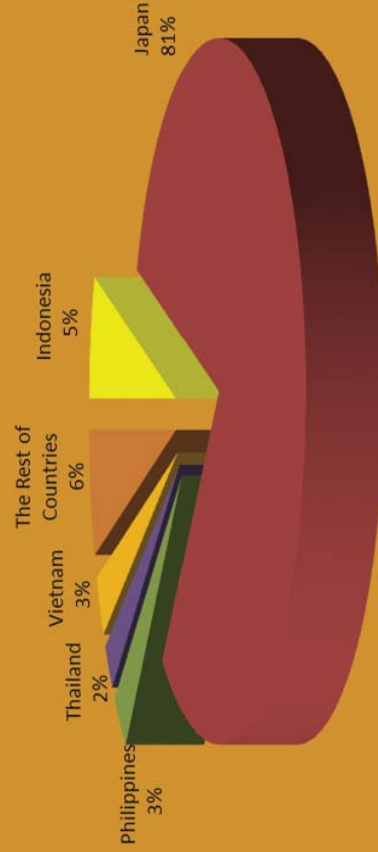
NILAI EKSPORT PAPAN GENTIAN BERKETUMPATAN SEDERHANA MENGIKUT DESTINASI DARI SARAWAK

砂拉越至各目的地之中密度纤维板出口值

Top Five Medium Density Fibreboard Export Destinations Trend
October '10 to March '11



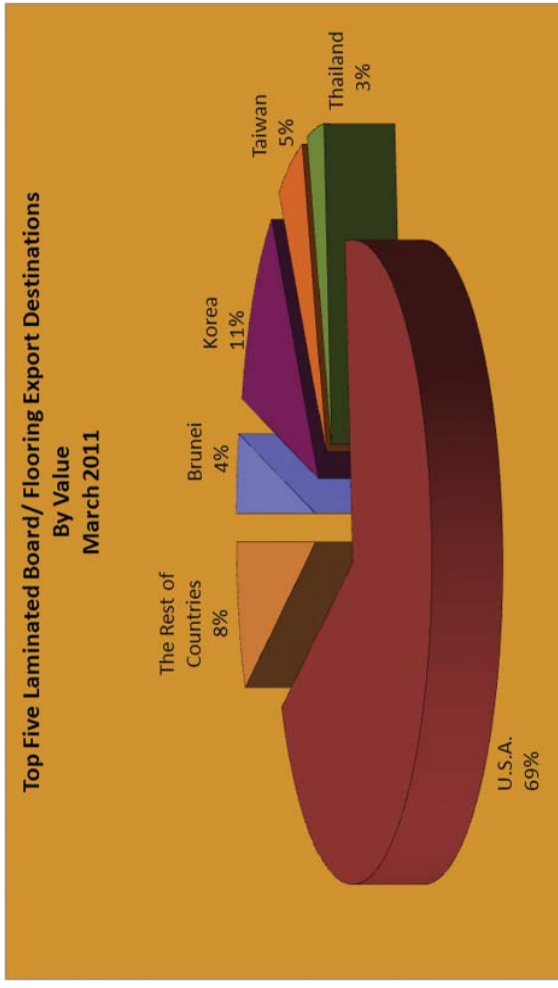
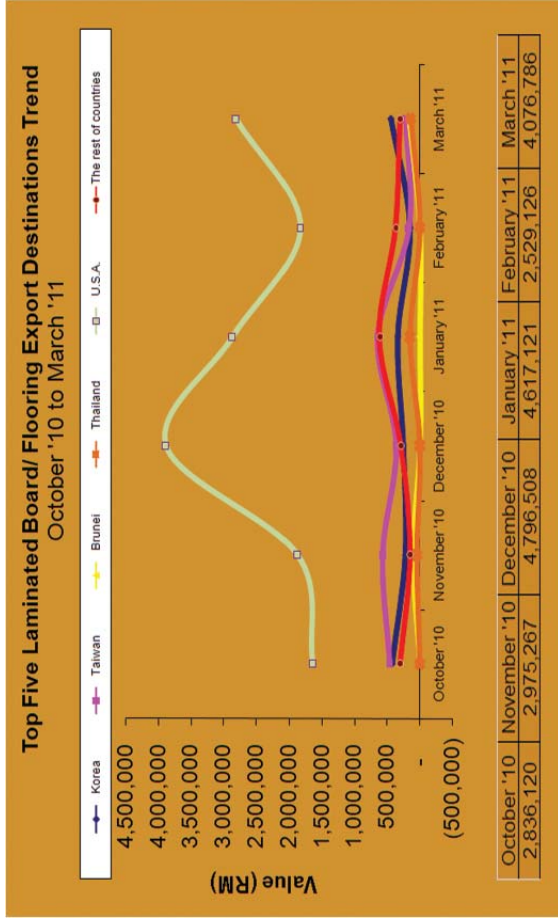
Top Five Medium Density Fibreboard Export Destinations
By Value
March 2011



EXPORT VALUE OF LAMINATED BOARD/ FLOORING BY DESTINATION FROM SARAWAK

NILAI EKSPORT PAPAN LAMINA/ LANTAI MENGIKUT DESTINASI DARI SARAWAK

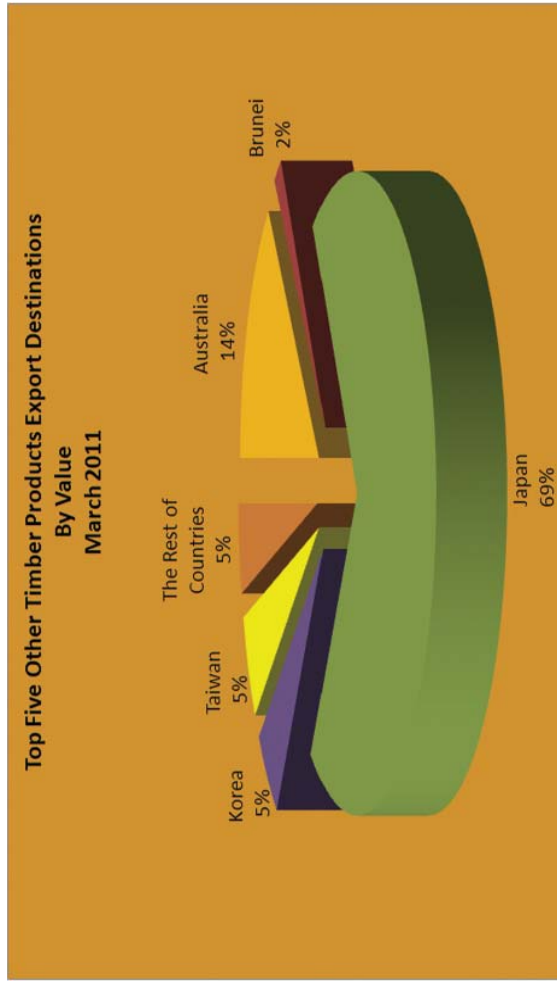
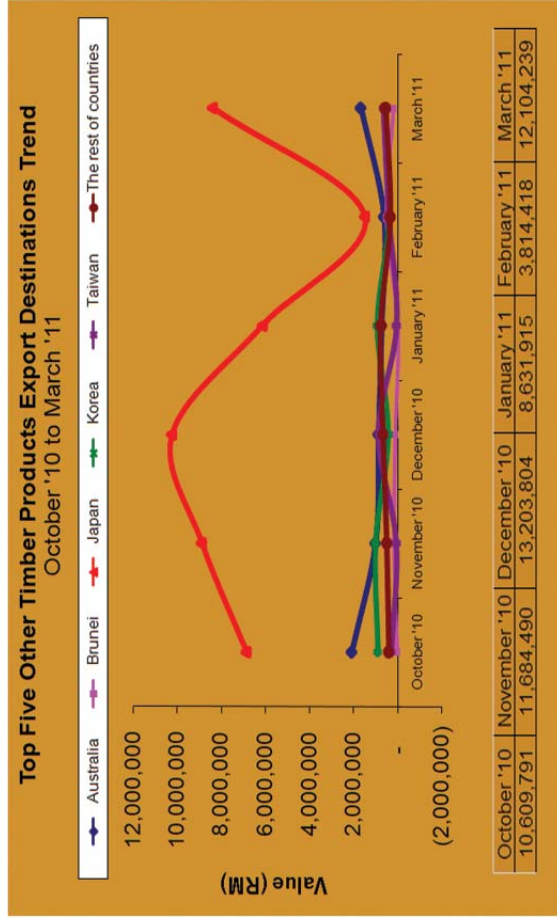
砂拉越至各目的地之层压板/地板出口值



EXPORT VALUE OF OTHER TIMBER PRODUCTS BY DESTINATION FROM SARAWAK

NILAI EKSPORT PRODUK KAYU KAYAN LAIN MENGIKUT DESTINASI DARI SARAWAK

砂拉越至各目的地之其他木制品出口值



Source : Sarawak Timber Industry Development Corporation

Wishing all Members and Readers

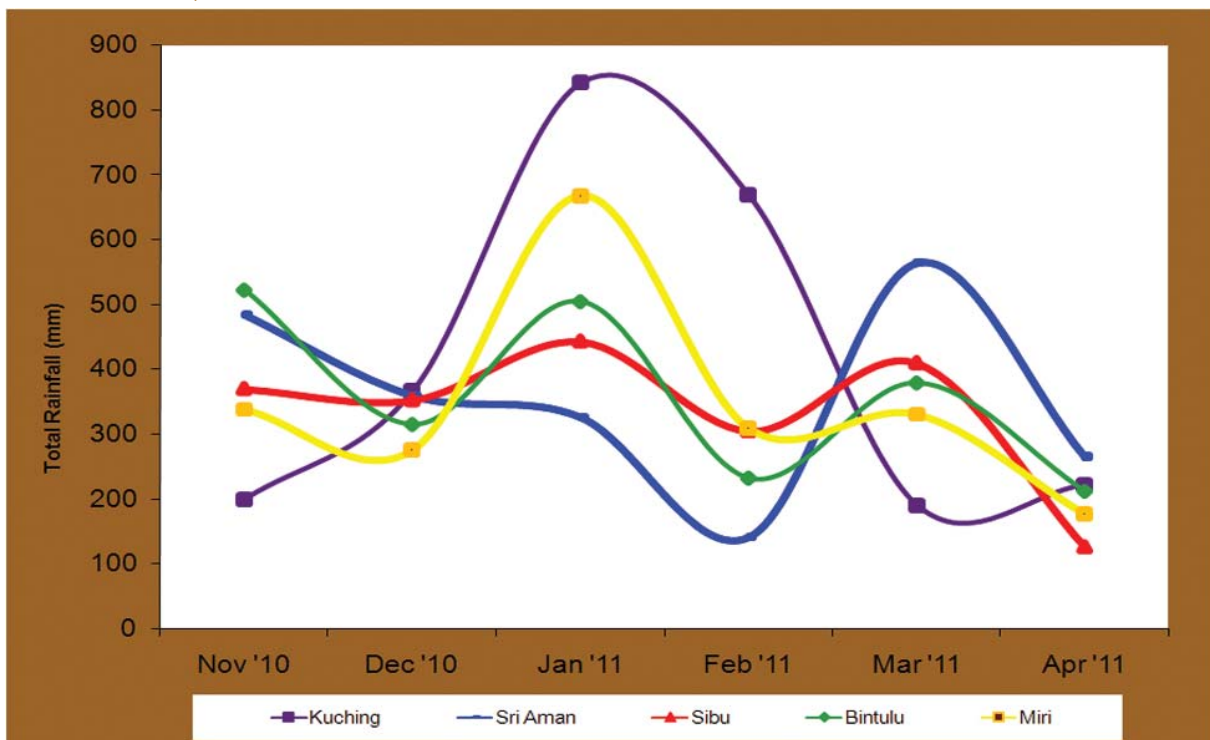
Selamat Gawai Dayak
Gayu guru, gerai nyamai

From the Chairman, Council Members and Management of STA

Pengerusi, Ahli-ahli Majlis serta kakitangan STA ingin mengucapkan Selamat Hari Gawai kepada semua ahli STA dan para pembaca

STA主席，理事会与职员在此祝愿所有达雅会员和读者丰收节愉快。

RAINFALL : NOVEMBER '10 - APRIL '11 KADAR HUJAN BULANAN



Source : Malaysian Meteorological Services